

Log in to Citrix Remotely from a PC or Mac

Find out how to connect to a regional Citrix Desktop while working remotely from a PC or Mac.

Items Needed for Setup

- One of the following RSA SecurID authentication mechanisms:
 - RSA Authenticate MFA soft token
 - RSA traditional soft token
 - RSA SecurID key fob
- A version of Citrix Workspace compatible with your computer's operating system

1 Access Skadlink and Install Citrix Workspace

Launch a browser (e.g., Chrome), navigate to <https://skadlink.skadden.com>, and select **Citrix Workspace for Windows & macOS**. On the Citrix Workspace App downloads page, scroll down and click on the version of the application compatible with your computer's operating system, then click the **Download** button. Complete the installation process and do not add an account to the Citrix Workspace application.

2 Return to Skadlink and Install VDI Plug-ins

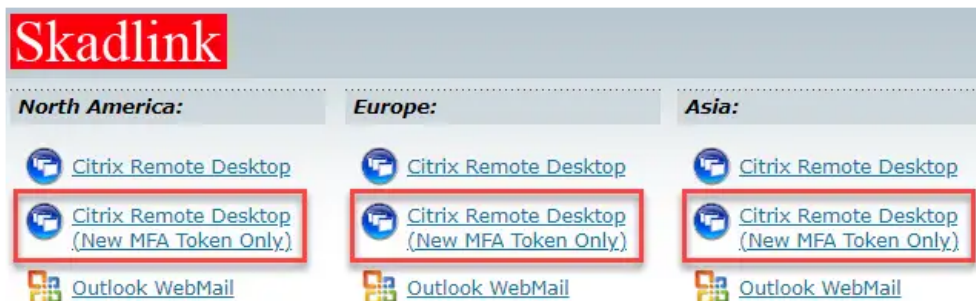
If you have not done so already, download and install Webex and Zoom VDI plug-ins on your computer so you can use these video conferencing applications *within* the 2023 Citrix Desktop:

- Log out of any active Citrix sessions and then, on your local desktop, navigate to <https://skadlink.skadden.com> and select the Webex and Zoom VDI plug-ins for your operating system (e.g., Windows or macOS). Complete the installation process for each plug-in.
- If installing the VDI plug-ins on a Mac, further action is required once you reach Step 9.

3 Return to Skadlink and Select the MFA Link for Your Region

Go to <https://skadlink.skadden.com> and click on your region's **Citrix Remote Desktop (MFA Token Only)** link.

Note: If you typically access the Citrix Desktop using a traditional soft token or FOB, click on your region's **Citrix Remote Desktop** link to proceed.



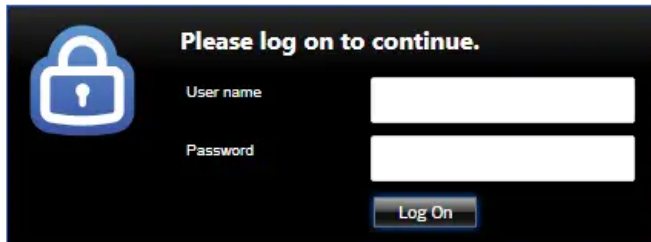
4

Sign in to Citrix Workspace

In the *User name* field, enter your Skadden network username. In the *Password* field, enter your Skadden network password and click **Log On**. If prompted, do not allow your browser to save your network password.

Note: If you typically access the Citrix Desktop using a traditional soft token or FOB:

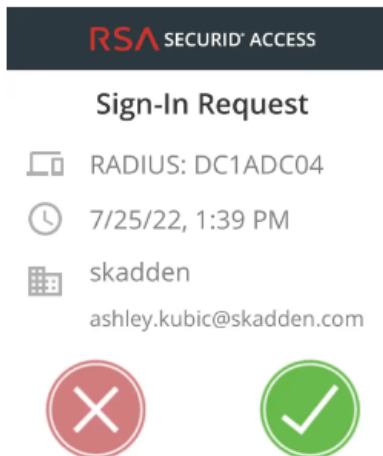
- **Traditional Soft Token** (i.e., not RSA MFA): Enter your Skadden network username, password, and the tokencode generated by your RSA SecureID app once you enter your 8-digit PIN. Click **Log On** and skip to Step 5.
- **FOB:** Enter your Skadden network username, password, and then, in the *RSA Passcode* field, enter your 8-digit alphanumeric PIN and the Tokencode generated by your FOB. Click **Log On** and skip to Step 5.



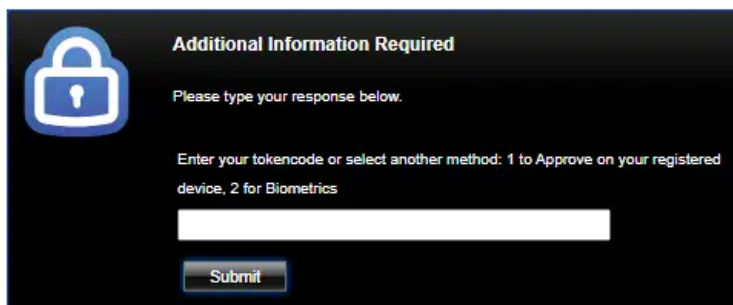
5

Approve the Sign-in Request

From a mobile device that is registered with the RSA Authenticate app, tap the **green checkmark** to approve the sign-in request.



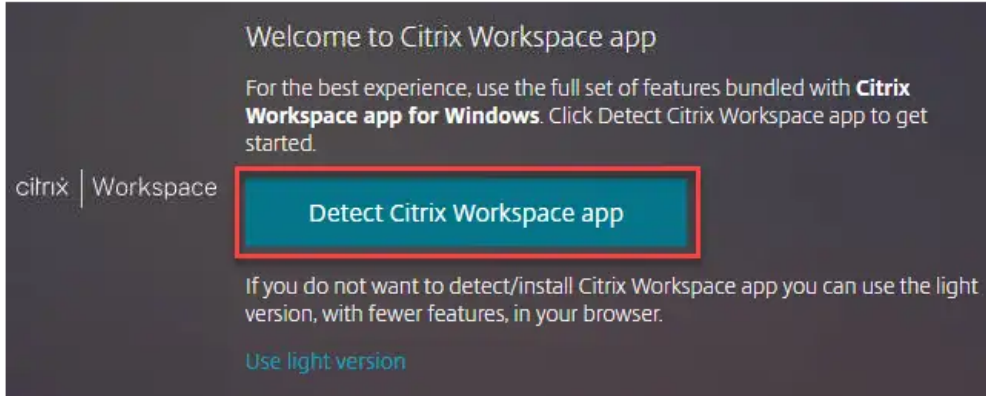
Note: If you do not approve the sign-in request within 20 seconds or do not see the sign-in request at all, you will receive a prompt on your computer similar to the below image. Type a **1** into the blank field and click **Submit**, then, on your mobile device, tap the **green checkmark** to approve the sign-in request.



6

Detect Citrix Workspace or Receiver

If prompted, click the **Detect Citrix Workspace app** or **Detect Citrix Receiver** button.

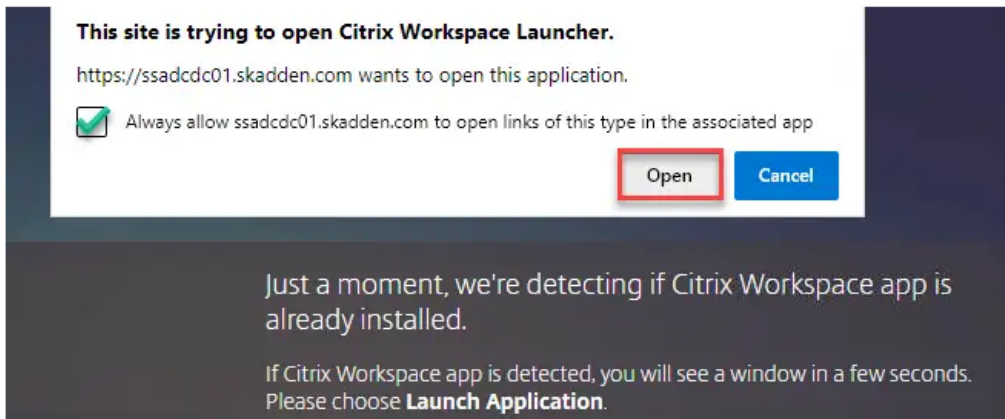


7

Open Citrix Workspace Launcher

If the Citrix application is not detected, respond to the following onscreen prompts:

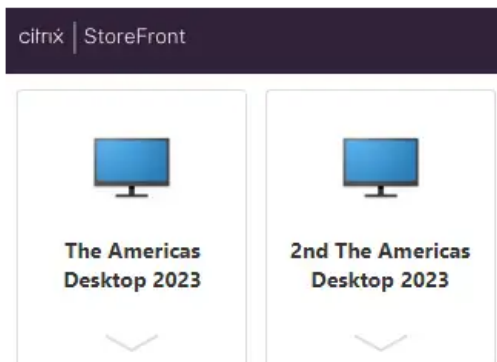
- Click the **Always allow ssadcdc01.skadden.com to open links of this type in the associated app** checkbox, then select **Open**.



8

Select a Desktop

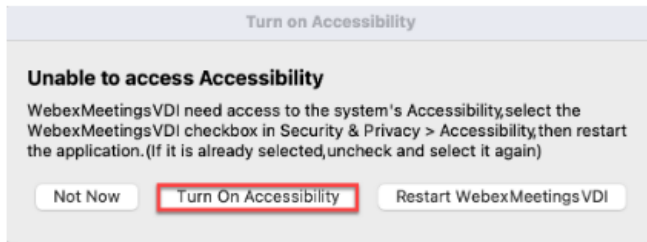
From the Citrix StoreFront window, launch your regional desktop. The Citrix Desktop opens via the Citrix Workspace application.



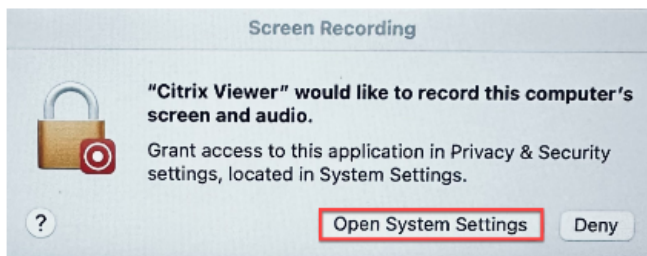
9

Complete VDI Plug-in Steps (macOS only)

If using a Mac, additional steps are required to use Webex and Zoom in Citrix.



- At the *Unable to access Accessibility* prompt, click **Turn On Accessibility** (if you do not see this prompt, go to **Apple menu > System Settings > Privacy & Security > Accessibility**) and enable **Citrix Viewer**
 - Enable **WebexMeetingsVDI** and enter your Mac password to confirm changes.
 - Return to the *Unable to access Accessibility* prompt and click **Restart WebexMeetingsVDI**.
 - Launch Webex on the Citrix Desktop and sign in using your Skadden account.
 - If prompted to use your microphone and webcam, click **Yes** or **OK**.



- At the *Screen Recording* prompt, click **Open System Settings** (if you do not see this prompt, go to **Apple menu > System Settings > Privacy & Security > Screen Recording**) and enable **Citrix Viewer**. *You are prompted to quit and reopen Citrix.* Disconnect from Citrix and then reconnect.
 - Launch **Zoom VDI** on the Citrix Desktop, click **SSO**, enter **skadden** in the *Company Domain* field, then click **Continue**.
 - Start a Zoom Personal Meeting and, when prompted, click **OK** to allow access to your microphone and webcam.